

GENERAL LIVESTOCK SHOWMANSHIP

Martin County, NC 4-H
Laura Oliver, Livestock Agent
252.789.4370
laura_oliver@ncsu.edu
<https://martin.ces.ncsu.edu/martinlivestockshow/>

1 AGES 5-7

- What is the feeding program for my animal?
- How to set up the animal & basic showmanship techniques
- Eye contact with the Judge
- Basic Parts of the Animal
- Follow judge's instructions
- Dress Properly: Neat collared shirt tucked-in, belt, NO holes, closed toed shoes are required.

2 AGES 8-12

- Proper bracing (when appropriate/species specific)
- Know most parts of the animal.
- Fitting and showmanship techniques
- Average Daily Gain (ADG)/Feed Efficiency
- General Animal Specific Information



3

AGES 13-19

- Carcass terms, animal performance information
- Diseases (As well as dewormers, and other medicines you have administered)



NC State University and N.C. A&T State University commit themselves to positive action to secure equal opportunity and prohibit discrimination and harassment regardless of age, color, disability, family and marital status, gender identity, genetic information, national origin, political beliefs, race, religion, sex (including pregnancy), sexual orientation and veteran status. NC State, N.C. A&T, U.S. Department of Agriculture, and local governments cooperating.

LAMB SHOWMANSHIP

- Provide a clear view of your lamb at all times.
- Allow plenty of space between you and the animal in front of you.
- Practice bracing lamb with knee.
- Use the dock as your control point.
- Keep lambs feet on the ground when bracing.
- Move calmly and slowly.
- Begin practice with halter and show without halter as skills improve.
- When changing positions set the feet closest to the judge first.
- Move to allow the judge to have full view of your animal.
- Lamb should be clean and closely sheared for the show.
- Equipment: soap, clippers, water, feed (to keep animal refreshed for 12 hours) buckets, fitting supplies

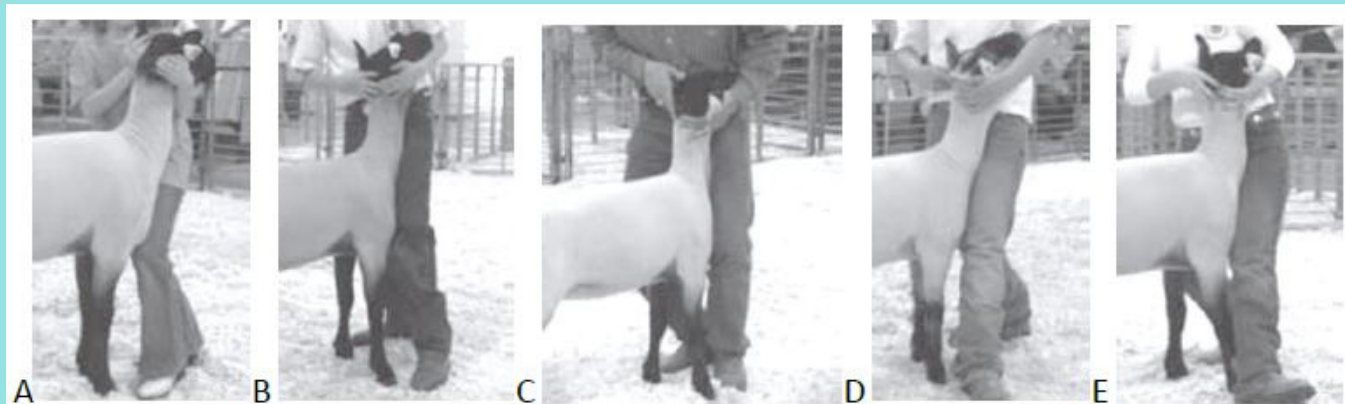
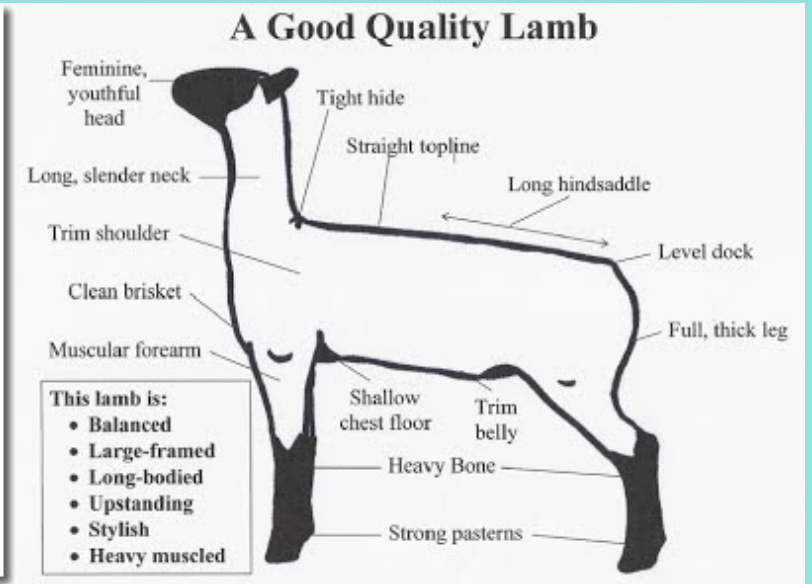
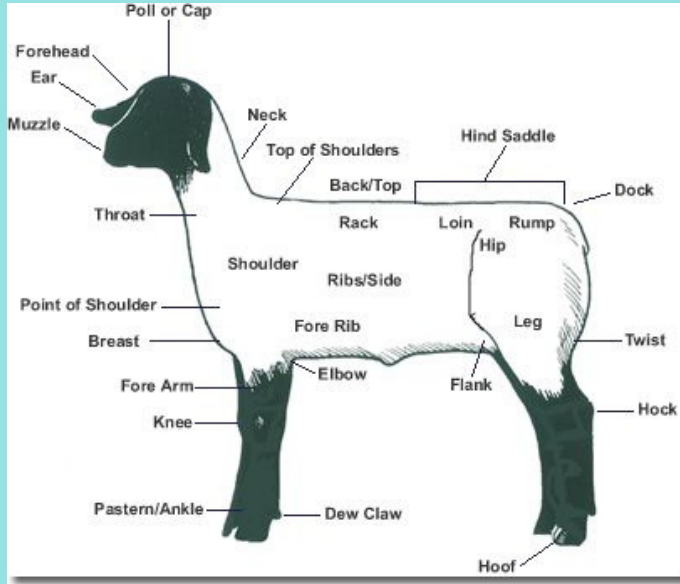


Figure 1. Correct hand, knee, and feet placement by the showman is critical to effectively brace a lamb. A = ideal for smaller showman, B = ideal for intermediate showman, C = ideal for larger showman, D and E = hands and knees are correct, but keep feet in front of lamb instead of potentially sticking out in the way of the judge or other showmen.